

Building Safer Communities in Scotland



Gordon Paterson,
Head of Building Safer Communities & Cashback
Scottish Government



@theBSCprogramme



www.bsc.scot

What we know.....



- The proportion of adults in Scotland experiencing crime has fallen from one-in-five in 2008/09 to one-in-eight in 2017/18.
- There has been a 42% decrease in overall crime and a 46% decrease in violent crime since 2008-09
- Despite a small 1% increase in 2017-18, crime recorded by the police is at the second lowest level since 1974, and is down 42% since 2006-07.
- People are feeling the safest they ever have in their communities since the start of the survey results. *(77% of adults said they felt very or fairly safe walking alone in their neighbourhood after dark)*
- 96% of adults said they felt very or fairly safe alone in their home at night, an increase from 93% in 2008/09 but down marginally from 97% in 2016/17.

Our National Outcomes

- 11 National Outcomes
- 81 National Indicators
- Publicly available on the National Performance website

<https://nationalperformance.gov.scot/>



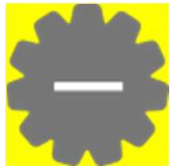
We live in communities that are inclusive, empowered, resilient and safe



Perceptions of local area

Percentage of adults who rate their neighbourhood as a very good place to live.

Performance Maintaining: 2016 = 57%: 2017 = 57%



Loneliness

Indicator in development



Perceptions of local crime rate

Percentage of respondents who think crime in their area has stayed the same or reduced in the past 2 years.

Performance Worsening: 2016 = 75.5%: 2018 = 72.6%



Community land ownership

Indicator in development

We live in communities that are inclusive, empowered, resilient and safe



Crime Victimization

Proportion of people who have been the victim of one or more crimes in the past year

Performance Maintaining: 2016 = 13.4%: 2018 = 12.5%



Places of interest

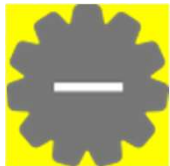
Indicator in development



Access to green and blue space

Proportion of adults who live within a 5 minute walk of their local green or blue space

Performance Worsening: 2016 = 65.4%: 2017 = 64.7%



Social Capital

Indicator in development

A JUST, SAFE & RESILIENT SCOTLAND

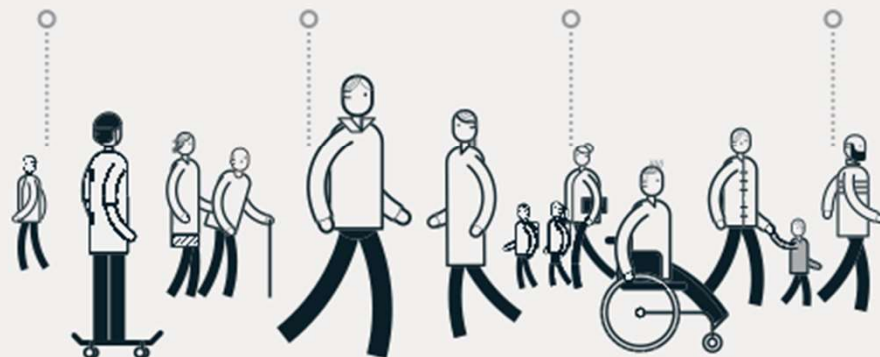
OUTCOMES

We live in safe, cohesive and resilient communities

Prevention and early intervention improve wellbeing and life chances

Our system and interventions are proportionate, fair and effective

We deliver person-centred, modern and affordable public services



PRIORITIES

We will enable our **communities** to be safe and supportive, where individuals exercise their rights and responsibilities

We will **enable** our people, economy and infrastructure to respond to major risk, recover from emergencies and adapt to emerging threats

We will **modernise** civil and criminal law and the justice system to meet the needs of people in Scotland in the 21st Century

We will work with others to improve **health and wellbeing** in justice settings, focusing on mental health and substance use

We will work to quickly identify offenders and ensure responses are **proportionate, just, effective and promote rehabilitation**

We will improve the experience of **victims and witnesses**, minimising court attendance and supporting them to give best evidence

We will use prison only where necessary to address offending or to protect public safety, focusing on **recovery and reintegration**



Justice Strategy Refresh

A JUST, SAFE AND RESILIENT SCOTLAND



INCLUSIVE, EMPOWERED, RESILIENT & SAFE COMMUNITIES

Are those which function well:

Socially

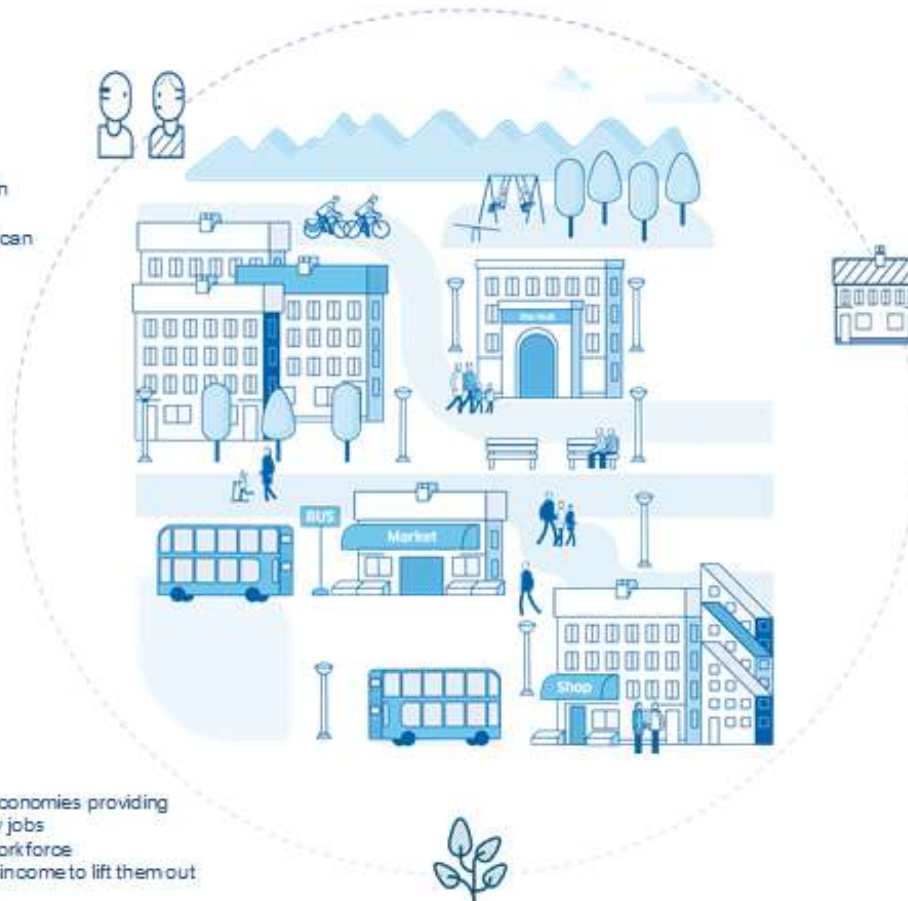
- Strong and effective networks and connections
- Everyday relationships and kindness
- Mutual help and support
- People are engaged and empowered in local decision-making
- People feel safe, that they belong and can trust others
- Communities are fair and inclusive

Economically

- Strong, diverse local economies providing access to good, quality jobs
- Flexible multi-skilled workforce
- People have sufficient income to lift them out of poverty
- Thriving private and social enterprise sector
- Community enterprises operate innovatively and successfully

Physically

- Infrastructure supports social interaction (e.g. street layout, traffic measures, community meeting spaces)
- Well planned neighbourhoods with accessible facilities, public services and community meeting spaces
- Infrastructure provides supportive social function
- Quality design and upkeep of buildings and spaces
- Quality public space and green space
- Infrastructure links to employment opportunities (e.g. affordable and accessible public transport links)



Building Safer Communities

Place Principle.....

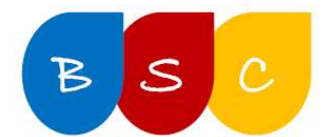
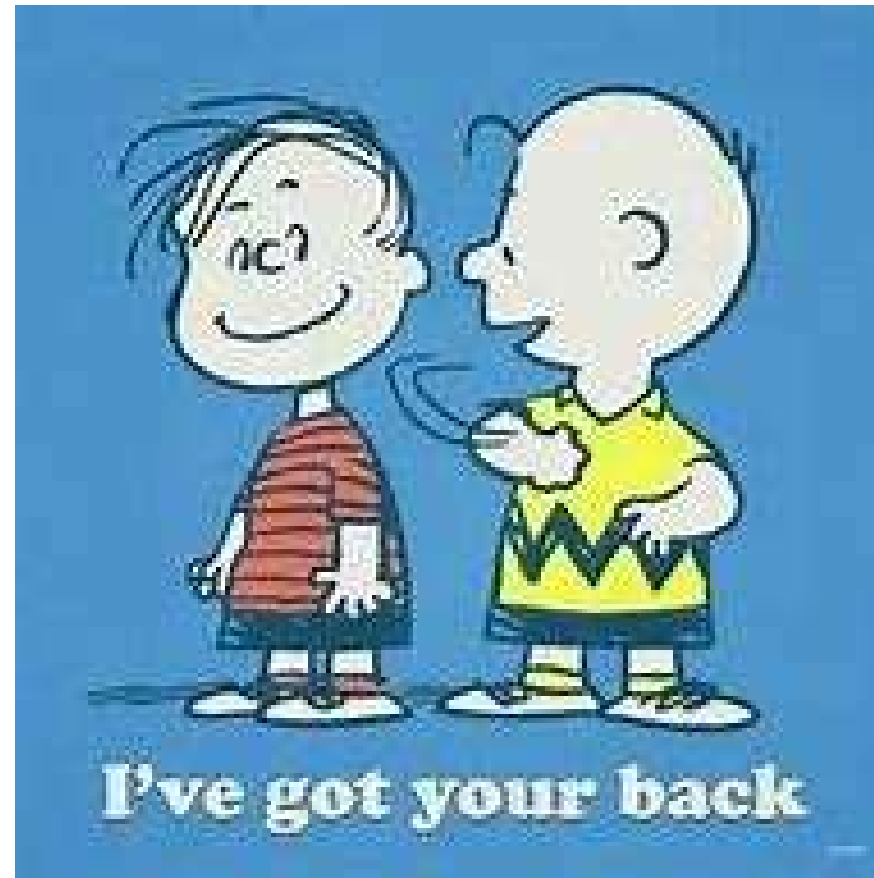
We recognise that:

- Place is where people, location and resources combine to create a sense of identity and purpose, and are at the heart of addressing the needs and realising the full potential of communities. Places are shaped by the way resources, services and assets are directed and used by the people who live in and invest in them.
- A more joined-up, collaborative, and participative approach to services, land and buildings, across all sectors within a place, enables better outcomes for everyone and increased opportunities for people and communities to shape their own lives.

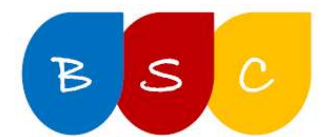
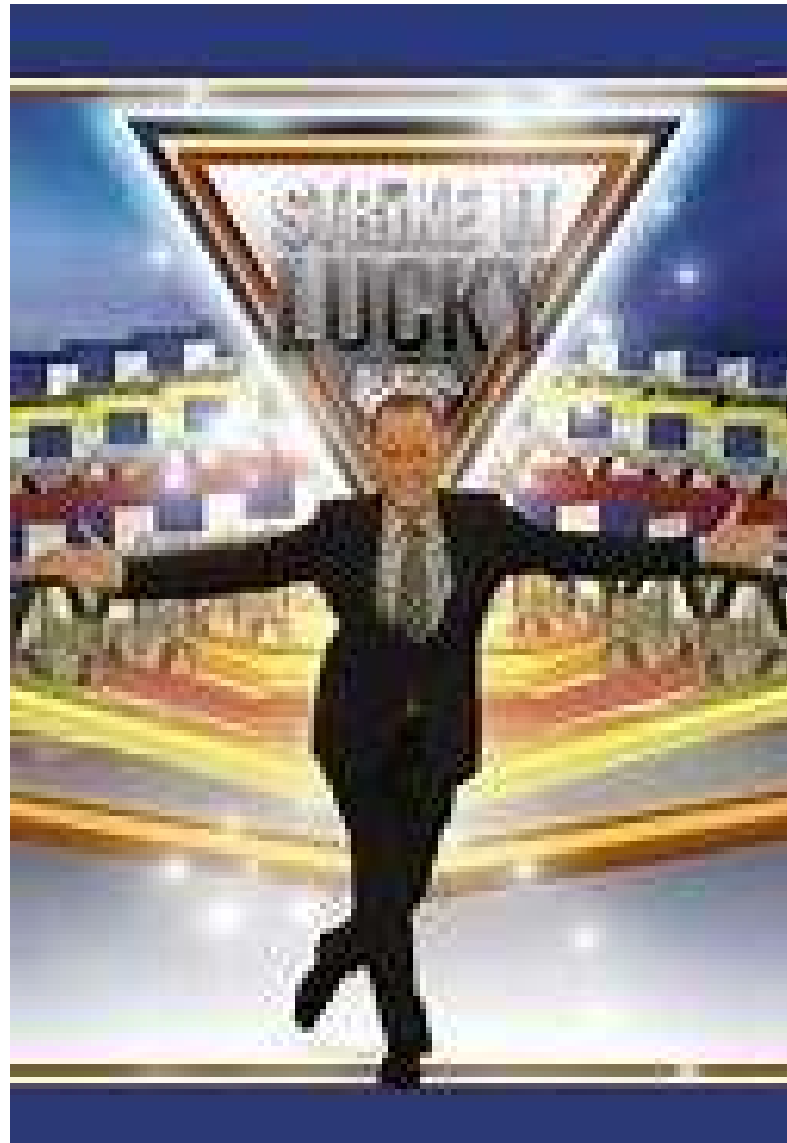
Community Safety



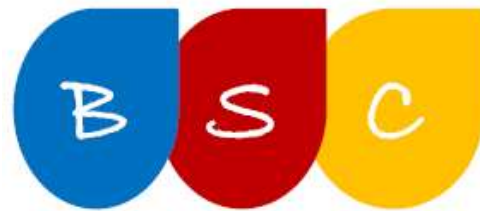




Building Safer Communities



Building Safer Communities



Building Safer Communities

@theBSCprogramme