

Our purpose

Working together to achieve the healthiest life possible for everyone in Ayrshire and Arran



**Infant, Children
& Young People's**
Transformational Change Programme

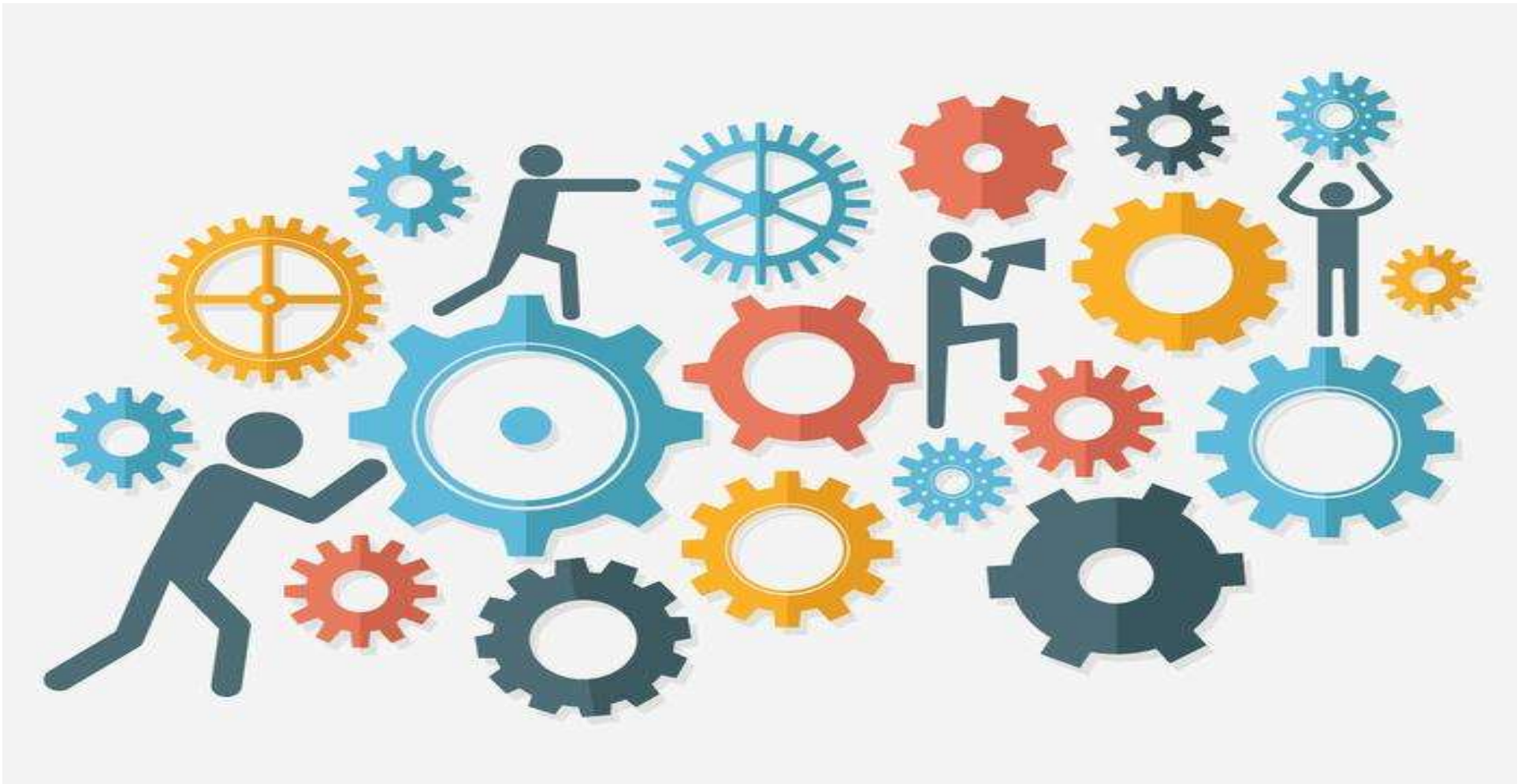
Public Health: Whole Systems Working in Action

Lynne McNiven
Interim Director of Public Health

Our values

Caring Safe Respectful

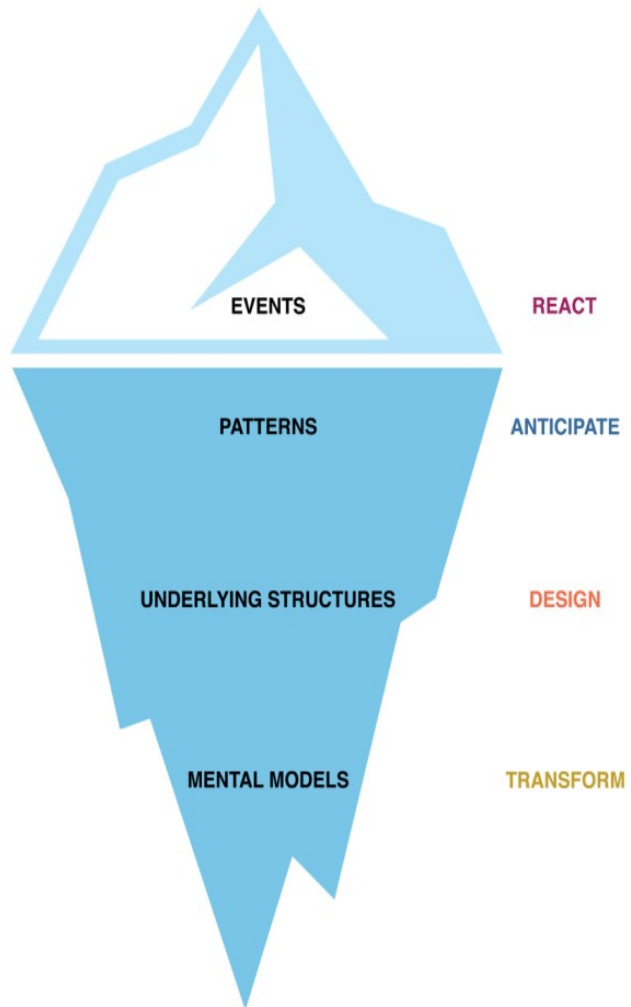
We work within complex, living systems.....unpredictable & difficult to change.....



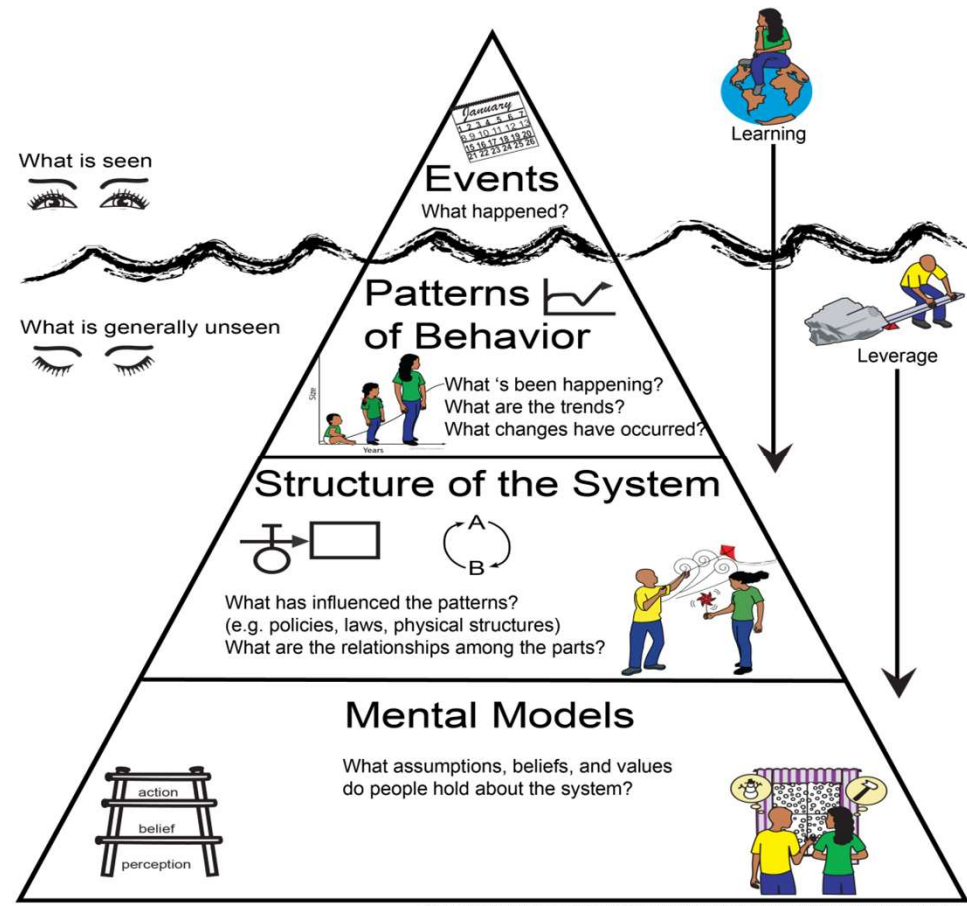
Whole Systems Approach: Identifies & links disparate components of systems, assesses the nature of links and relationships.....



Mental Model Challenges



Iceberg... Seeing What's Below the Surface



Adapted by Systems Thinking in Schools, Waters Foundation, www.watersfoundation.org, from Innovation Associates, Inc.



...deepest set of beliefs about how the world works....how do we develop into shared ideas?

Driven by agents of change....all of you!!

Working together...building relationships & shared values.....



Our purpose

Working together to achieve the healthiest life possible for everyone in Ayrshire and Arran



Infant Children and Young People's Transformational Change Programme

- **Poor health & social outcomes**
- **numerous comprehensive strategies and plans**
- **Develop methodology to join the dots**
- **Align areas of work which appeared disparate.**
- **Programme Board to develop Work streams.**

Our values

Caring Safe Respectful



"Working with partners to deliver change across these identified priority areas"

RE ATTACHMENT

dartmouth films

K P J R

NHS

connected baby

present

The Scottish Tour

RESILIENCE

THE BIOLOGY OF STRESS & THE SCIENCE OF HOPE

The acclaimed documentary on childhood trauma

Edinburgh • 17 May • 12:00 Cameo Cinema • tinyurl.com/19y7u SOLD OUT!	Perth • 21 June • 7:00pm MacArts Centre • tinyurl.com/1kd3mvrph
Tranent • 18 May • 7:00 The Fraser Centre • tinyurl.com/1lk SOLD OUT!	Dumfries • 24 June • 12noon Robert Burns Centre • tinyurl.com/1azpwwkh
Glasgow • 20 May • 12:00 Glasgow Film Theatre • tinyurl.com/1tss0t SOLD OUT!	Dunlop • 24 June • 12noon Dunlop Village Hall • tinyurl.com/1mh3mvt2
Ardrossan • 20 May • 12:00 Ardrossan Community Cinema • tinyurl.com/1wob6wvv SOLD OUT!	Elgin • 24 June • 12:30pm Moray Playhouse • tinyurl.com/1814kko
Hamilton • 23 May • 12:00 Chateaufort Country Park • tinyurl.com/1st17aee SOLD OUT!	Stirling • 1 July • 12noon Macrobert Arts Centre • tinyurl.com/1 SOLD
Airdrie • 25 May • 12:00 Airdrie Town Hall • tinyurl.com/1a SOLD OUT!	Angus To be announced
Kirkcaldy • 1 June • 7:00 Adam Smith Theatre • tinyurl.com/1 SOLD OUT!	Clackmannanshire To be announced
Dundee • 3 June • 11:00 DCA • tinyurl.com/1efvkk6 SOLD OUT!	East Renfrewshire To be announced
Galashiels • 3 June • 12noon MacArts Centre • tinyurl.com/1n62qnnz	Falkirk To be announced
Greenock • 8 June • 7:00 Waterfront Cinema • tinyurl.com/1 SOLD OUT!	Isle of Arran To be announced
Inverness • 10 June • 12noon Eden Court • tinyurl.com/1arfk6l2	Midlothian To be announced
Lerwick • 10 June • 12:00 Marsel Cinema • tinyurl.com/1tba SOLD OUT!	Monymusk, Inverurie To be announced
Aberdeen • 15 June • 6:00 Belmont Filmhouse • tinyurl.com/1 SOLD OUT!	Renfrewshire To be announced
Lennoxton • 17 June • 1:30pm Campsie Memorial Hall • tinyurl.com/1kcpa89	South Ayrshire To be announced
Oban • 17 June • 12noon Oban Phoenix Cinema • tinyurl.com/1hvs0u6a	Sornoway To be announced
Orkney • 17 June • 12noon Pickaquooy Centre • tinyurl.com/1k21nau1	West Lothian To be announced

Admission £7.50

Booking and details at www.connectedbaby.net/events/



Background to ACE's

The theory of Adverse Childhood Experiences (ACEs) emerged from an initial study which uncovered a link between obesity and childhood sexual abuse. These initial findings led to the development of a much larger study involving 17,337 patients. This larger study documented several key types of ACEs which are associated with increased risk of poor outcomes, these key ACEs are outlined below.

Primary Adverse Childhood Experiences

Emotional Abuse	Sexual Abuse	Physical Abuse	Neglect
Domestic Violence	Parental Drug Abuse	Parental Mental Illness	Parental Separation/Divorce
			Parental Incarceration

The results from this study documented that 64% of participants had at least one of the above ACEs. The findings also demonstrated that those who had experience of four or more ACE's were at particular risk of poor health and social outcomes, some of the key findings are documented below.

Outcome of ACE's

4 to 12 Times Increased Risk of alcoholism, drug addiction and depression	2 to 4 Times Increased Risk of Smoking, Poor Self-Rated Health, Multiple Sexual Partners & STI's	1.5 Times Increased risk of being physically inactive and/or obese	Associations with Heart Disease, Cancer, Respiratory Diseases, Fractures & Liver Disease
--	---	---	---

Our purpose

Working together to achieve the healthiest life possible for everyone in Ayrshire and Arran



**Infant, Children
& Young People's**
Transformational Change Programme

Any Questions?

Our values

Caring Safe Respectful